

# Uncontrolled Crossings

The zebra crossing is often referred to as an uncontrolled crossing. This means that the traffic is not controlled by lights and that road users have to be cautious and observant and stop when necessary.

## Identifying a Zebra

You may see hazard signs on approach (right) but zebra crossings are easily identified firstly by their flashing yellow beacons on top of black and white striped poles. As you get closer you will see the black and white stripes on the crossing area and the zigzag markings. There is a yield line just under a metre from the crossing area, which marks where road users should yield if necessary.

## MSM on approach

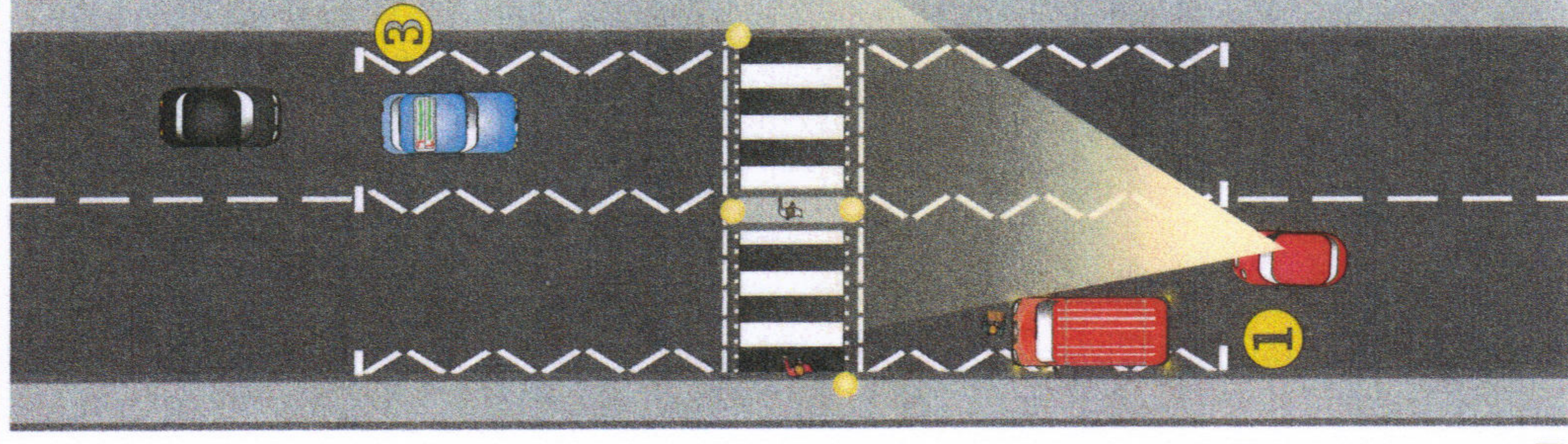
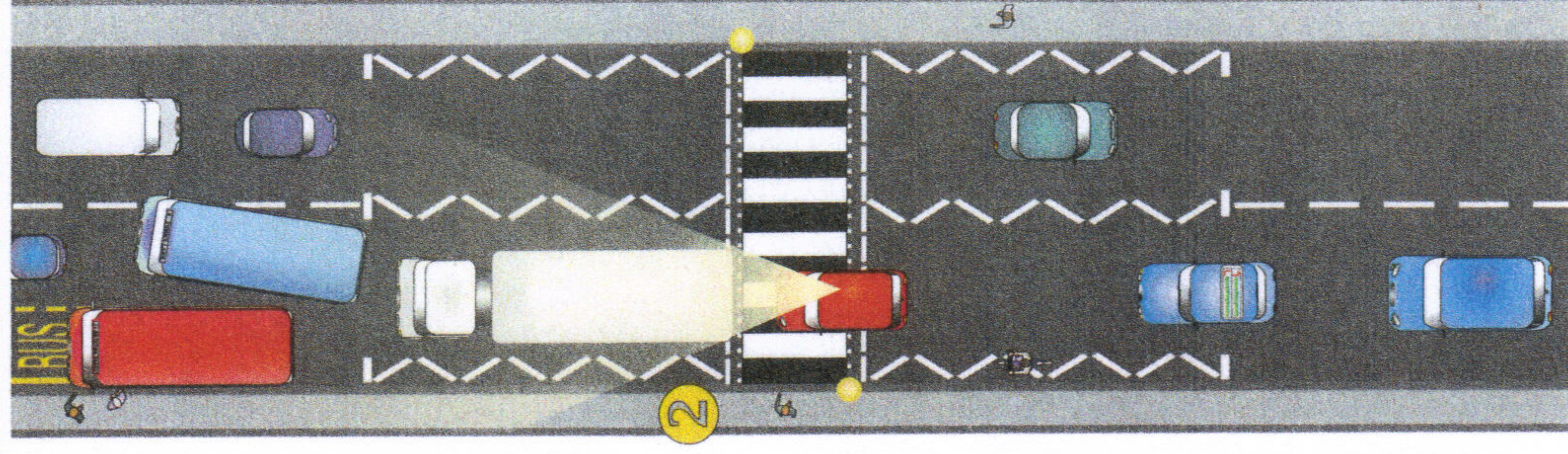
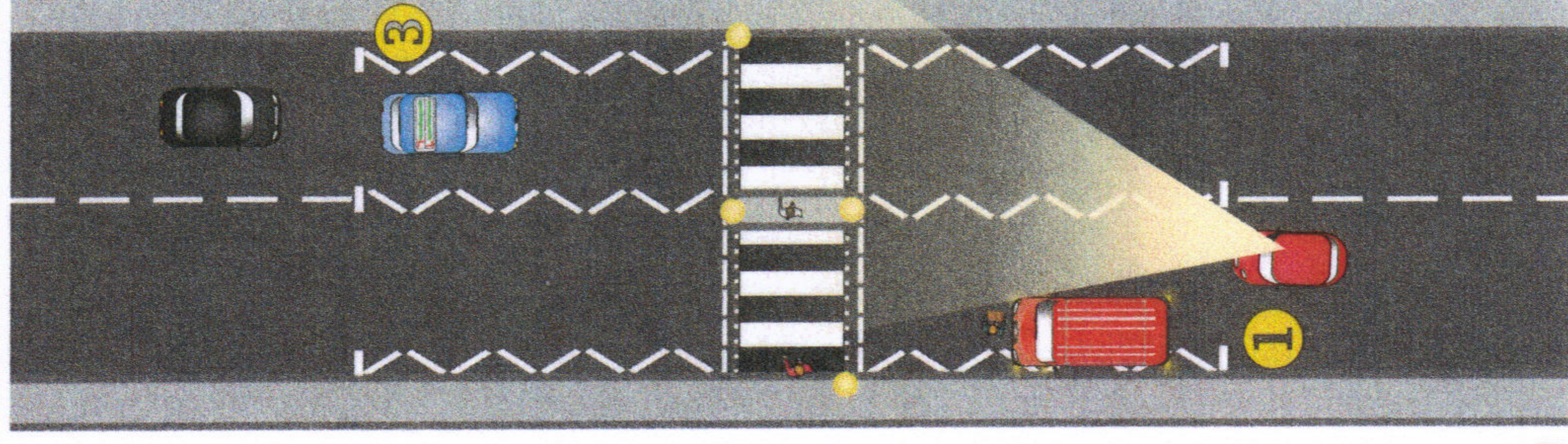
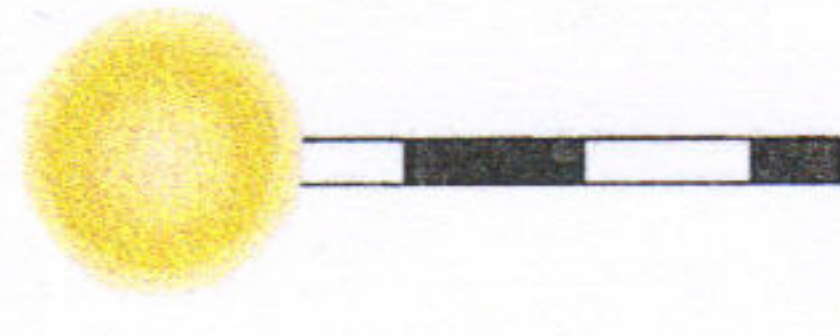
As soon as you have identified a zebra crossing ahead you should start your **MSM** routine as you are approaching a hazard. Check your mirrors early to give yourself time to assess and anticipate the actions of other road users (including pedestrians and cyclists) in-front and behind you. Scan the crossing area, if there are pedestrians nearby you should be prepared to slow down or yield to allow them to cross safely. If your view of the crossing (on either side) is blocked, as in **1**, you should be more cautious as pedestrians could be crossing out of view.

## At the Crossing

If someone is waiting to cross you should yield if you can do so safely. Be courteous to anyone with a pram or pushchair, children and the elderly who may be hesitant. If someone has moved onto a crossing you **must** give way. When you yield at a crossing you should apply the handbrake immediately. When the crossing is clear, and you have checked for pedestrians approaching from either side of the crossing, you may proceed with caution. You should always keep the crossing clear when in queueing traffic unlike the red car in situation **2**.

## Zebra Crossings with a central island

If the crossing has a central island, as in **1**, each side should be treated as a separate crossing.



The shaded areas in **1** & **2** coming from the red cars illustrate the drivers zone of vision, what he can and can't see. Think about the potential dangers and how they could be avoided and discuss these with your instructor.

## Quick Quiz

**Strive2Drive**  
**0868824784**

1. What are the three things you **must not** do within the zig-zag area of a crossing?
2. Why might an arm signal be useful in position **3** and which arm signal would you give?
3. True or false? Revving your engine and edging forward is a good signal to let pedestrians know you are about to move off.
4. Why should you never beckon a pedestrian to cross?