

Emerging at T-Junctions

'Emerging' is the term used to describe when a vehicle leaves a minor road to enter or cross a major road. You must give way to the traffic on the major road. On approach to the junction you should carry out your MSM/PSGL routine and assess whether the junction is open or closed. This will help you decide on your speed on approach and the gear you select when as you arrive at the junction.

Open Junction 1

An open junction is one which offers you a good clear zone of vision into the new road, in both directions, as you approach. This will allow you to assess the speed and distance of traffic in the new road before you arrive at the junction. It is possible, if you assess a safe gap early enough, to continue without stopping. You may even emerge in 2nd gear.

Closed Junction 2

A closed junction is one where your zone of vision is restricted by buildings, fences, bushes, parked vehicles, bends etc. You can still assess the volume, speed and type of traffic passing the end of the road, but you can only make the decision to go or wait when you have a clear view of the road in both directions.

Emerging

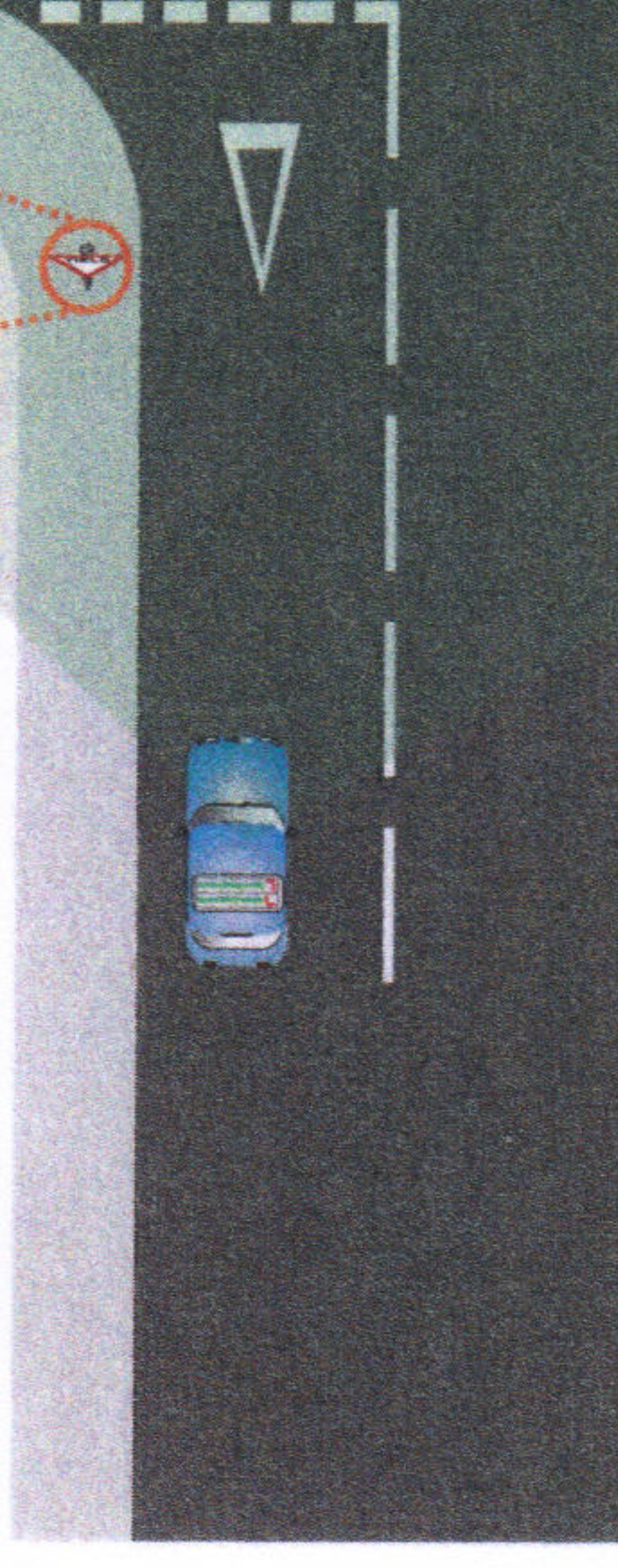
On approach to a junction you should be ready to go, but prepared to stop. Before you commit to go, you must have made 'effective observations' first, look at least twice in each direction. When you emerge you must not cause another road user to stop, slow, swerve or swear. You must make sure you have time to pick up your speed to that of the traffic flow, provided it is not over the speed limit.

Use of the LADA routine as you approach will help you make an earlier, more informed decision. **Look** - what can you see? **Assess** - is it safe to proceed? **Decide** - based on what you have assessed. **Act** - carry out your decision to proceed or wait.

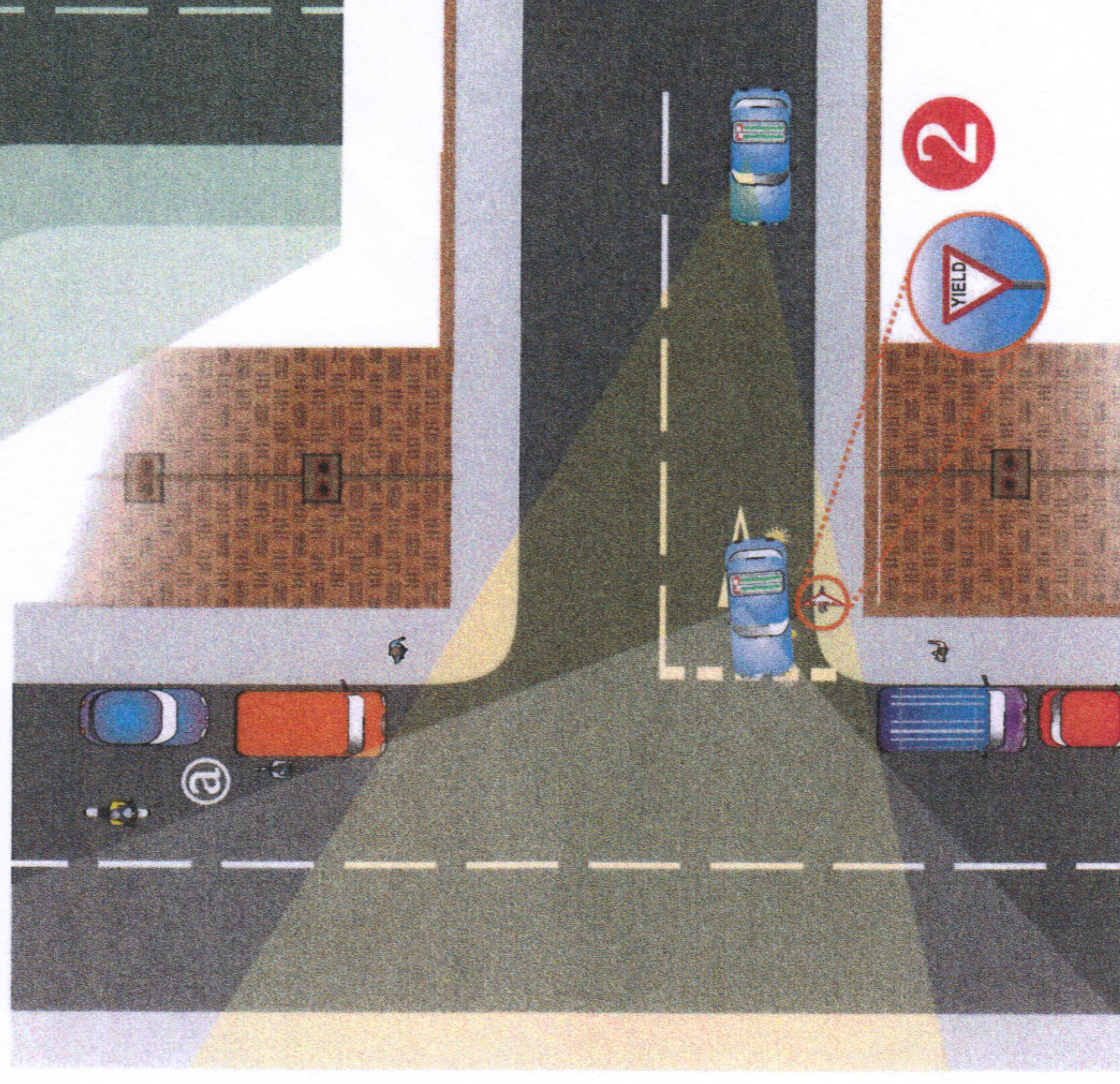
Beware of approaching vehicles, particularly large trucks or buses, which can hide another vehicle which could be overtaking as at @.

Strive2Drive
0868824784

STRIVE2DRIVE
PH: 086 8824784
strive2drive.ie



1



2

As you approach a junction, your zone of vision improves (as shown in 2). But even at the give way line the view is not clear due to the parked vehicles.

Quick Quiz

1. If the two road signs at the top of the page were covered by snow, how would you know what they were?
2. True or false? If your view is obscured but you are over the give way line then it is safe to proceed.
3. Why is it important to look at least twice in each direction before emerging?
4. What is meant by the term zone of vision?