

# Controlled Crossings

The **Pelican Crossing** is one of the main types of signal-controlled crossing which is activated by pushing a control button. The pedestrians should wait for the traffic lights to change and for the green man signal to light up before stepping onto the crossing area.

## Identifying a Pelican Crossing

You may see hazard signs on approach (illustrated right) and of course the traffic lights should be visible well ahead. A Pelican is the only signal-controlled crossing which has a flashing amber phase in the traffic light sequence. You will sometimes see two shades, covering a red and green man or three where there is a red, amber and green man. As you get closer you may also see the zigzag markings on the road.

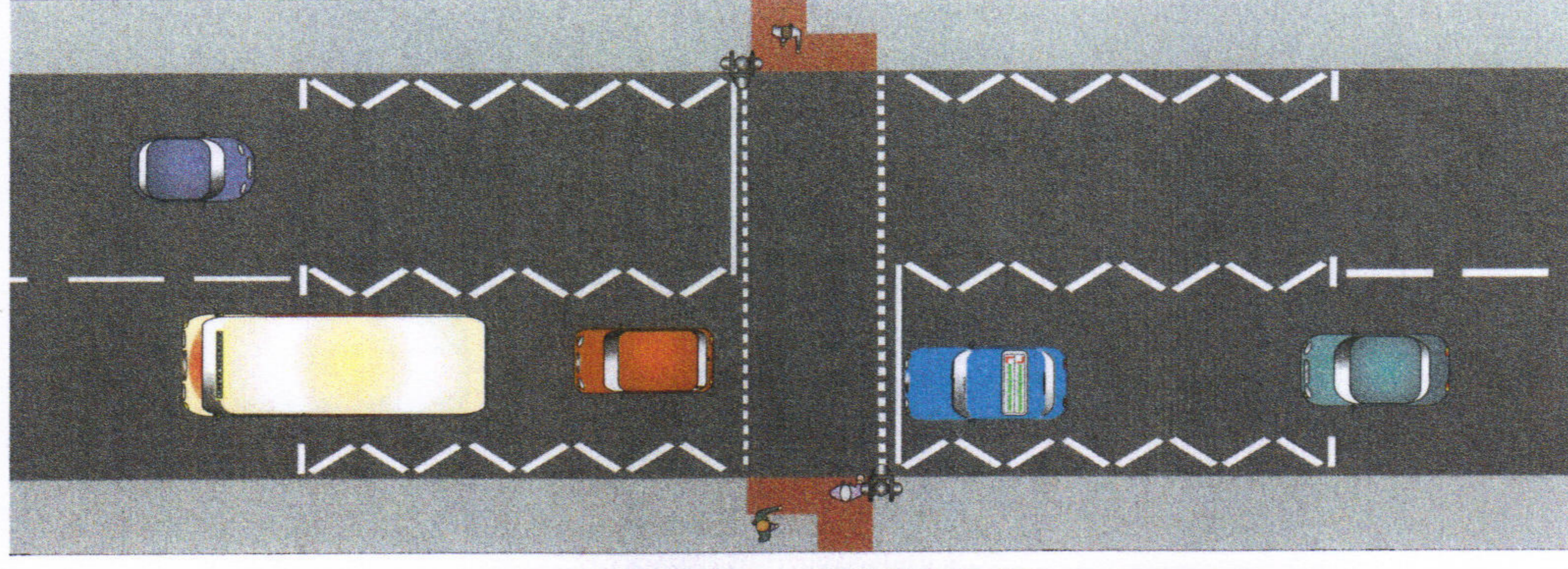
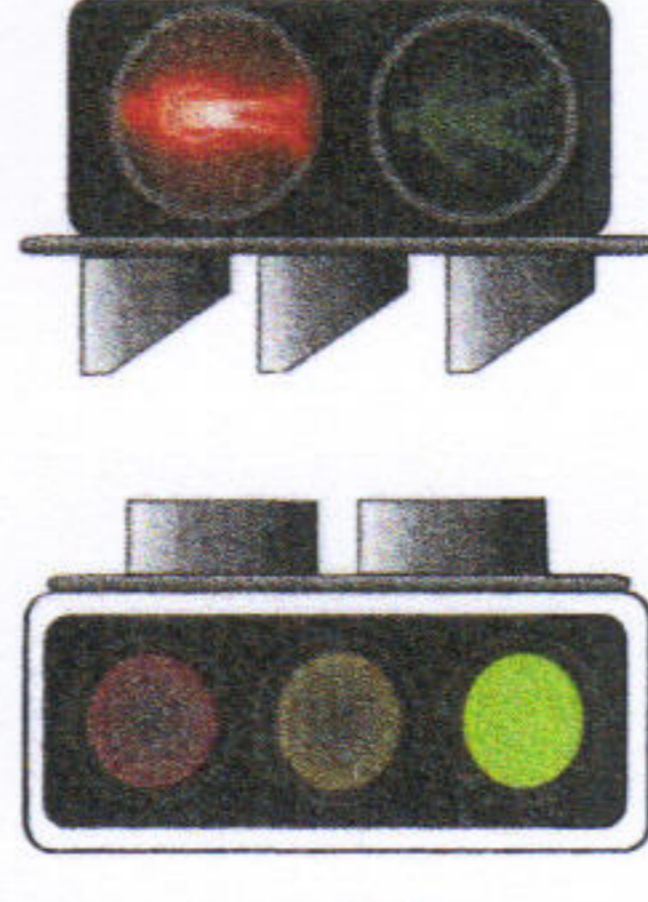
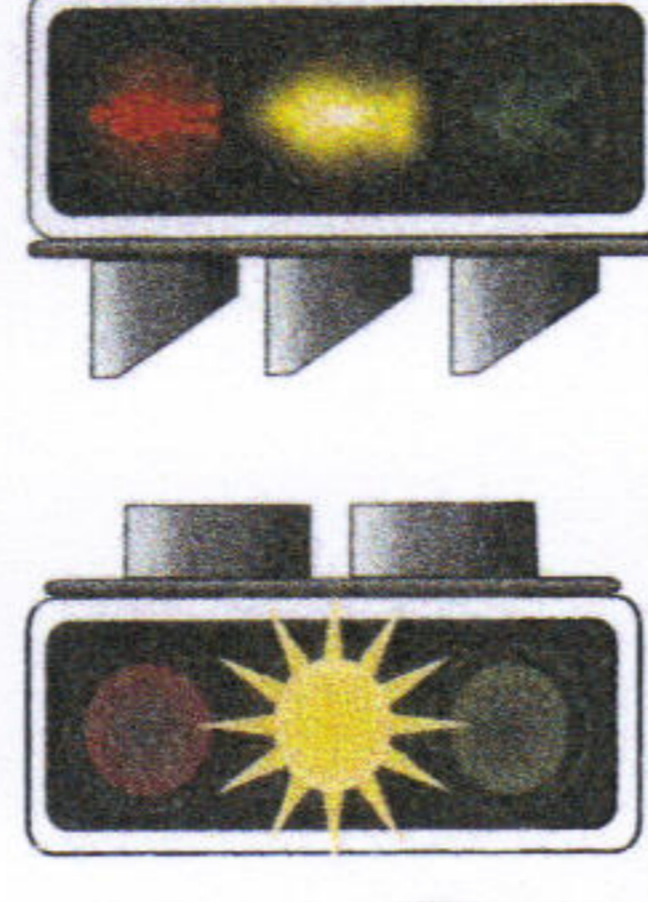
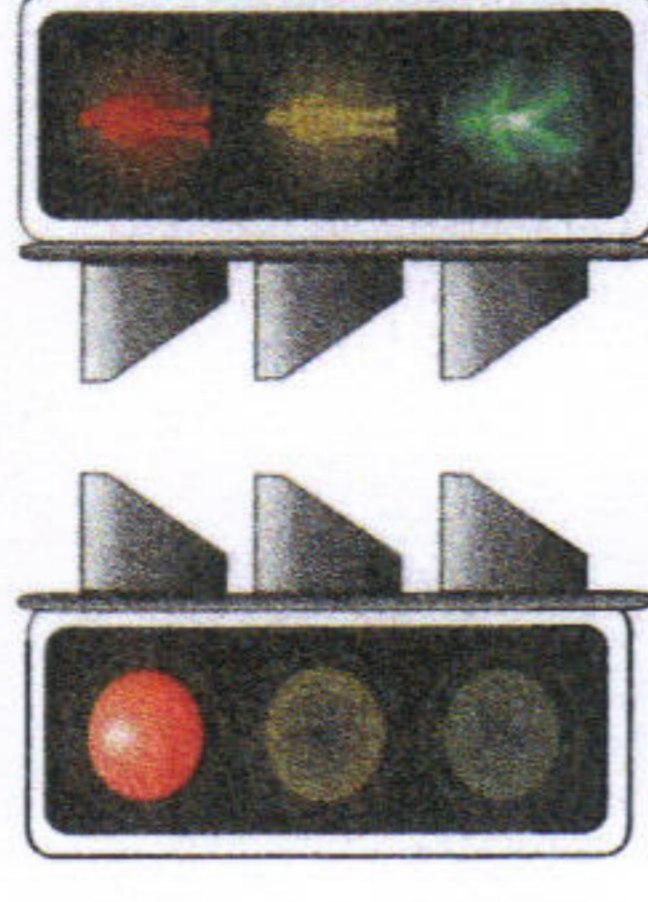
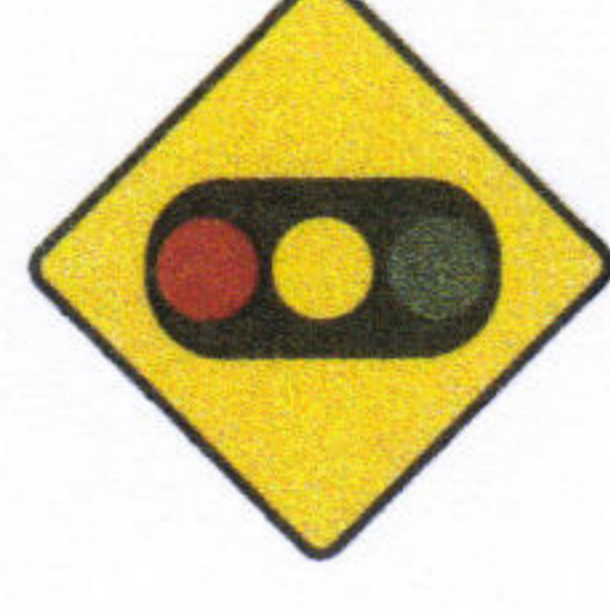
## MSM on approach

Once you have identified a pelican crossing you should start your **MSM** routine as you are approaching a hazard. Check your mirrors and be ready to slow down. Scan the crossing area looking for pedestrians who may wish to cross and be prepared for impatient people who can't wait for the lights to change. If there are pedestrians at the crossing ease off the accelerator and have a final glance in your mirrors before entering the zigzag area and maintain your speed and be ready to stop. **Do not** accelerate towards the crossing.

## At the Crossing

If the lights change to red as you approach stop if you can do so safely behind the stop line and apply the handbrake. When the amber light starts to flash you may proceed with caution if the crossing is clear, but beware of people rushing onto the crossing. If pedestrians are still crossing you must continue to give way, even after the lights have changed to green. Do not wave pedestrians across or intimidate them by revving your engine. When it is safe to proceed check your mirrors before moving off.

When approaching a crossing in a slow moving queue you must keep the crossing clear. Pelican crossings which go straight across the road should be treated as one crossing, even if they have a central island. So, you must give way to pedestrians who are crossing from the other side of the road. The only exception to this is a staggered crossing where each side is treated as a separate crossing.



**The Zig-Zag area:** You **must not** park, stop or overtake within the zig-zag area of a pedestrian crossing.

## Quick Quiz

1. True or false? The flashing amber light means that you must give way to any pedestrians on the crossing.
2. What is the purpose of the red paved area at the crossing?
3. Where should you wait if you are moving along in a queue of traffic at a crossing?
4. What are the differences between pelican and puffin crossings?

**Strive2Drive**  
**0868824784**